	SUCCESS KEY TEST SERIES X- Semi English (Unit Test -2 Science-2 (Ch-4,5,6,)) Science And Technology - II	DATE:
		TIME: 1 hrs
		MARKS: 20
	SEAT NO:	<input type="text"/> <input type="text"/> <input type="text"/> <input type="text"/> <input type="text"/> <input type="text"/> <input type="text"/> <input type="text"/>

Q.1 A) Solve the following questions.

(2)

1) **State True or False**

Octopus is most clever animal among all hemichordates.

2) is formed by biotic and abiotic factors and their interactions with each other.

B) Choose the correct alternative and rewrite the sentence

(3)

1) Exoskeleton is absent in -

a. Dolphin b. Pomfret c. Turtle d. Salamander

2) Which products form green energy ?

a. Conventional b. Combustible c. Radioactive d. Eco-friendly

3) Environment Conservation Act was enacted in

a. 1980 b. 1986 c. 2000 d. 1972

Q.2 Solve the following questions. (Any two)

(4)

1) Hydroelectric energy, solar energy and wind energy are called renewable energies. Justify.

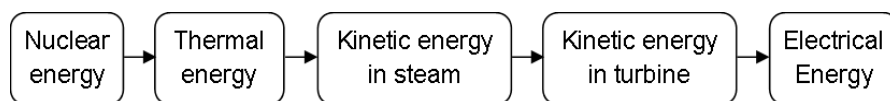
2) Give examples of non-conventional sources of energy.

3) Which are the different trophic levels in the food chain ?

Q.3 Solve the following questions. (Any two)

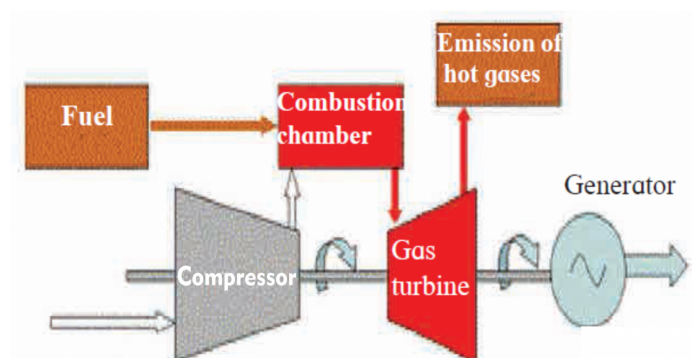
(6)

1) Explain energy transformation in nuclear power plant with a flow chart.



2) Give your opinion about whether hydroelectric plants are environment friendly or not ?

3)



i. Which energy is generated from the power plant ?

ii. State its source.

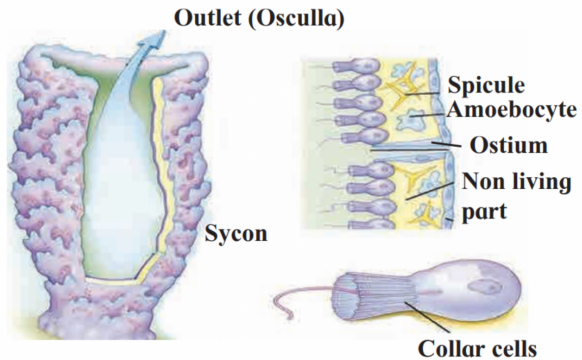
iii. Which is more ecofriendly – Power generation from coal or Power generation from natural gas ?

Why ?

Q.4 Answer in brief (Any one)

(5)

1)



Answer the following questions based on the given diagram.

- To which phylum does the organism belong ?
- What is the body symmetry of these organisms ?
- What is the mode of reproduction in them ?
- How does the water movement occur in Porifera ?
- Which type of body organization is seen in them ?

2) Label diagram of Amphioxus. Note the characteristics of Cephalochordata.

